
ORION



102 Champagne



108 Wine



109 Plum



14 Cherry Red



17 Garnet



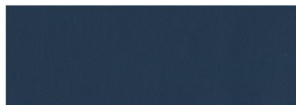
205 Spring



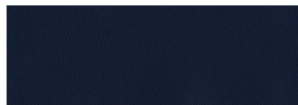
21 Meadow



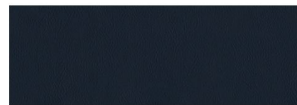
24 Deep Teal



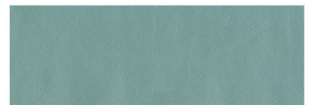
303 Denim Blue



306 Naval Blue



308 Midnight Blue



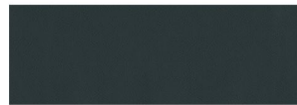
34 Spa



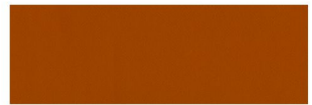
31 Lagoon



35 Royal



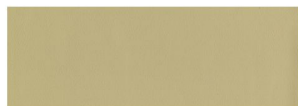
37 Smokey Blue



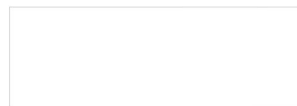
44 Pumpkin Spice



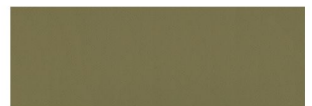
54 Citron



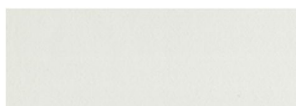
605 Cream



602 Mystic White



609 Taupe



61 White Cap



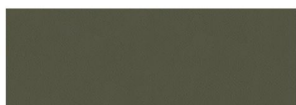
63 Vanilla



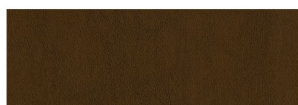
64 Pearl



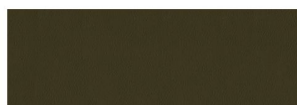
66 Diamond



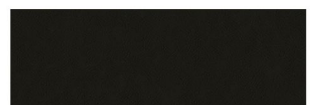
802 Mocha



804 Amber



805 Bark

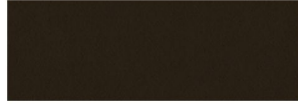


809 Chocolate

ORION



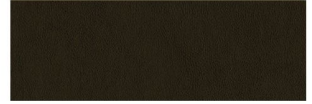
83 Tan



87 Chestnut



86 Earth



88 Tobacco



902 Seagull



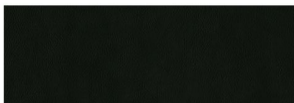
903 Fog



905 Steel



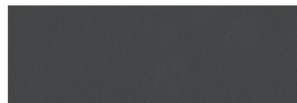
908 Chinchilla



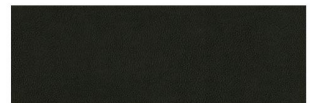
909 Raven



91 Dove



97 Slate



98 Charcoal

ORION

NUMBER OF COLORS / NO. DES COULEURS:	Available in 40 colors
ABRASION / RÉSISTANCE À L'ABRASION:	1,500,000 Double Rubs (Wyzenbeek)
AFTERTREATMENT FINISHING	Finished with Endurepel Armour
BREAKING STRENGTH	ASTM D751-06: Procedure A, CFFA 17-2013 - Weft 94 lbs x Warp 101 lbs
CLEANING CODE / CODE DE NETTOYAGE:	W - Clean fabrics with water-based cleaning agents or water based foam
CLEANER DISCLAIMER	Dilution ratios must be followed. Materials must be wiped with clean water after use to remove any cleaning residue and wiped dry with a clean cloth.
CLEANERS APPROVED	Cleanable with Bleach, Cleanable with Diluted 1 Accel Five TB., Cleanable with Diluted 1 Virox 5., Cleanable with Diluted 1 Oxiver Plus, Cleanable with Diluted 1 Oxiver TB Plus, Cleanable with Diluted 1 Accel Concentrate, Cleanable with Diluted 1 Isopropyl Alcohol, Cleanable with Clorox Disinfecting Wipes, Cleanable with Diluted 1 Oasis 146
CLEANING INSTRUCTIONS	A 1:10 diluted solution of household bleach is recommended for cleaning, disinfecting and sterilizing
COLD CRACK / FISSURATION À FROID:	-55 OC, -67 OF
CONSTRUCTION	Polyvinyl Chloride Coated Faux Leather Fabric
CONTENT BACKING / CONTENUDU REVERS:	100% Polyester
CONTENT FACE / COMPOSITION:	100% Polyvinyl Chloride (PVC)
CROCKING / DÉGORGEMENT:	AATCC 8: Dry crocking = Class 5, AATCC 8: Wet crocking = Class 5
FINISH	Endurepel Armour - Stain and Soil Resistant, Anti-Bacterial
FIRE RETARDANCY / RÉSISTANCE AU FEU:	CALTB117-2013, IMO FTP Code 2010 - Part 8, MVSS302, NFPA 260 Class 1, UFAC Class 1
HYDROSTATIC HEAD	ISO 1419 Method C (Accelerated Ageing) (Jungle Test) 14 Weeks, ASTM D3690-02 Sect. 6.11 (Hydrolytic Stability)
INDUSTRY	Contract, Fitness, Healthcare, Hospitality, Marine OEM, Office Seating, Residential, RV, Transportation
MILDEW RESISTANCE / RÉSISTANCE À LA MOISSISSURE:	Mildew Resistant
PINKING PERFORMANCE	ASTM E 1428 15-A
RAILROADED / DIRECTION DU TISSU:	Non Railroaded
ROLL SIZE / DIMENSION DU ROLEAU:	30 yds (27 m)
SEAM SLIPPAGE / GUSSEMENT DE LA COUTURE:	ASTM D751 Fill 64 X Warp 67 lb
TEAR STRENGTH / RÉSISTANCE À LA DÉCHIRURE:	Passes ASTM D2261 - Weft 13 x Warp 10, Passes ASTM D751 - Weft 12 x Warp 10
TENSILE STRENGTH / RÉSISTANCE À LA TRACTION :	Passes ASTM D751 - Weft 94 x Warp 101
THICKNESS	Product thickness is 1.1 in.
USES / UTILISATION:	Automotive Seating, Bags, Decorative Accessories, Healthcare Seating, Hospitality Seating, Marine Seating, Office Seating, Residential Seating, RV Seating
WEIGHT / POIDS:	736 gsm, 33.1 oz/yd, 21.7 oz/sq yd
WIDTH / LARGEUR:	55 in. (140 cm)